

INSIGHTS NETWORKING

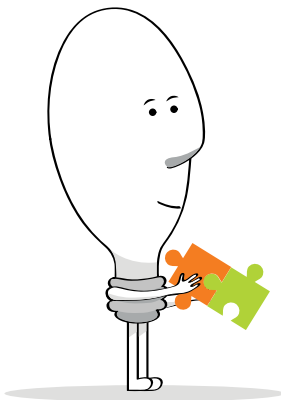
World
of Insights

How to play Insight Cards

Preferably in a room where it is easy to move around. Perfect for a networking setting, with group sizes from 12 to 30 people.

Hand out two cards for each player randomly.

The aim is for everyone to collect insights for personal growth and business innovation.

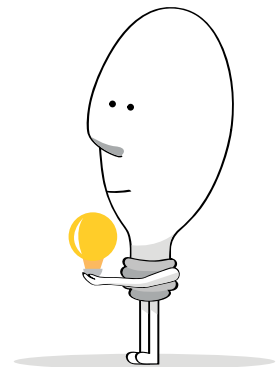


1. Form trios and combine cards

Form groups of three in the room. Put your cards together face down and randomly pick one of the question cards.

2. Reflect and Exchange

Read the question out loud and take a couple of minutes to answer the question with your best insights together. Mix the cards and deal back two cards for each player before moving on.



3. Mix and Repeat

Players form new groups. Repeat stages 1 and 2 for as long as you want. We recommend 20-30min.

If possible, wrap up by sharing one key insight from the game and write down an idea you would like to take into action.

